

# Zirconia Sintering Furnace

## BSM-S30



 Large Capacity

 Pollution-free

**BSM**

Chengdu Besmile Medical Technology Co., Ltd.  
www.bsmdental.com  
T:+86-28-85317108  
E:info@cdbesmile.com

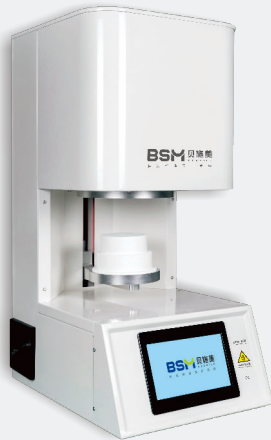
Besmile Dental America Inc.  
20311 Valley Blvd, Suite# I, Walnut, CA 91789  
T: (626)921-5798  
E:admin@bsmdentalus.com

  @Besmile  @besmile\_aconia





# Sintering Furnace BSM-S30



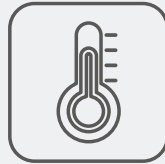
- Approx. 80 single crowns could be sintered at the same time
- 3 built-in sintering programs, 100 customized sintering program capacity
- High-purity silicon molybdenum heating elements
- Intuitive operation with 7" true color touch screen
- Type B thermocouple
- PID intelligent temperature control
- High-performance insulation materials, excellent heating preservation
- High-performance motors, steady operation



Large capacity



Pollution-free



Precise temp.  
Control



Ease to use



Low noise

## [Technical Data]

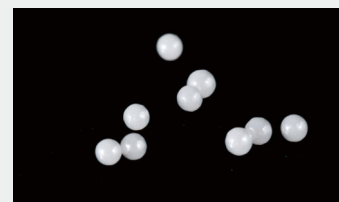
Dimension(W.D.H)	400*590*870mm
Sintering Space	φ110*90mm
Number of Heating Elements	4
Heating Element	High-purity silicon molybdenum
Power Supply	220V/50Hz
Working Temperature	≤1600°C
Operation	7" color touchscreen
Weight	85kg
Sensor	High-precision type B thermocouple
Heating Rate	≤10°C/min
Rated Power	3 KW
Heating Type	Standard



Sintering Tray



Silicon Molybdenum Heating Element



Pure Zirconium Beads